

EC-11

11-pin C3 relay socket | Time cubes | Screw terminal



General data

Rated load	10 A / 250 V
Dielectric strength	
- All terminals / DIN rail	2.5 kV rms / 1 min
- Terminal / terminal	2.5 kV rms / 1 min
Conductor cross section	
- Single wire	4 mm ² / AWG 12 or 2 x 2.5mm ² / AWG 14
- Multi wire (un-crimped)	0.34 mm ² / AWG 22 ... 2.5 mm ² / AWG 14
Nominal screw torque	0.8 Nm
Screw Dimension	M3.5 Pozi slot
Mounting	TH35 (EN 60715) or back panel mounting
Storage temperature (no ice)	-40 ... 80 °C
Operation temperature	-25 ... 60 °C
Weight	56 g
Housing material	PA / PC

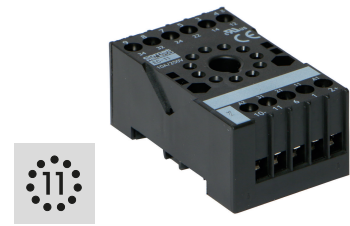


fig. 1. Wiring diagram

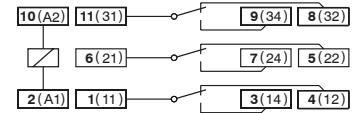
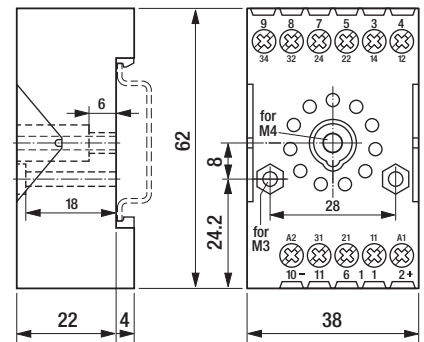


fig. 2. Dimensions (mm)



Technical approvals, conformities

Standards EN 60664-1

Approvals