

# C4-A40DX/DC110V

4 pole | changeover contact | Faston



## Main circuit

|  |                   |
|--|-------------------|
| Available contact materials                      | ⚡ AgNi            |
| Recommended minimum contact load                 | 10 mA / 5 V       |
| Maximum contact load AC                          | 10 A / 250 V AC-1 |
| Maximum contact load DC                          | 10 A / 30 V DC-1  |
| Inrush current                                   | 30 A, 20 ms       |
| Rated load AC                                    | 2 500 VA          |
| Rated load DC                                    | fig. 3.           |
| Rated current                                    | 10 A              |
| Mechanical endurance (cycles)                    | ≥ 20 000 000      |
| Electrical endurance at rated load AC-1 (cycles) | ≥ 500 000         |

## Control circuit

|                           |   |
|---------------------------|---|
| Nominal voltage           | see table product references              |
| Operating voltage range   | 0.8 U <sub>N</sub> ... 1.1 U <sub>N</sub> |
| Pick-up voltage           | ≤ 0.8 U <sub>N</sub>                      |
| Release voltage           | ≥ 0.1 U <sub>N</sub>                      |
| Power consumption AC / DC | 2.4 VA / 1.4 W                            |

## Coil table

| V DC | Ohm   | mA |
|------|-------|----|
| 110  | 8 117 | 14 |

## Insulation

|                                |                |
|--------------------------------|----------------|
| Test voltage open contact      | 1 kV / 1 min   |
| Test voltage contact / contact | 2.5 kV / 1 min |
| Test voltage contact / coil    | 2.5 kV / 1 min |
| Overtoltage category           | III            |
| Insulation resistance at 500 V | ≥ 1 GΩ         |
| Pollution degree               | 3              |

## General data

|   |                |
|---|----------------|
| Storage temperature (no ice)              | -40 ... 80 °C  |
| Operation temperature                     | -40 ... 60 °C  |
| Pick-up time / bounce time                | 20 ms / ≤ 3 ms |
| Release time / bounce time                | 8 ms / ≤ 1 ms  |
| Maximum switching frequency at rated load | 1 200 / h      |
| Weight                                    | 90 g           |
| Housing material                          | PA / PC        |

## Accessories

|                                  |                    |
|----------------------------------|--------------------|
| Socket                           | S4-J, S4-P         |
| Blanking plug                    | S0-NP (BAG 10 PCS) |
| Wall mounting adapter for C4, C5 | S5-R (BAG 5 PCS)   |
| Test button without locking      | S5-HP (BAG 10 PCS) |

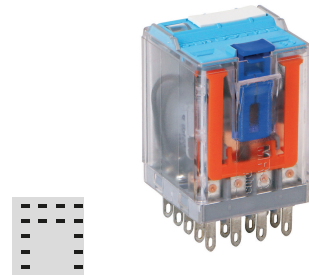


fig. 1. Wiring diagram

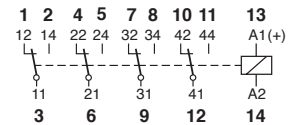


fig. 2. AC voltage endurance

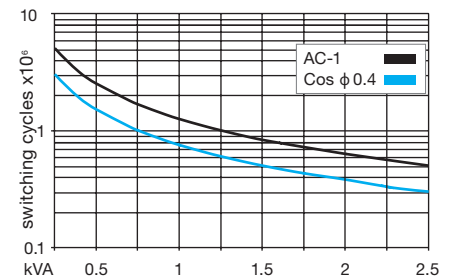


fig. 3. DC load limit curve

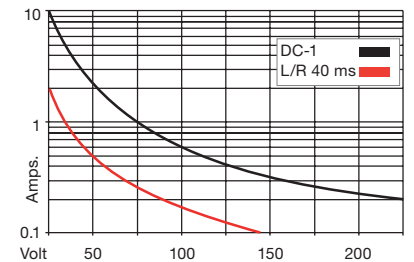
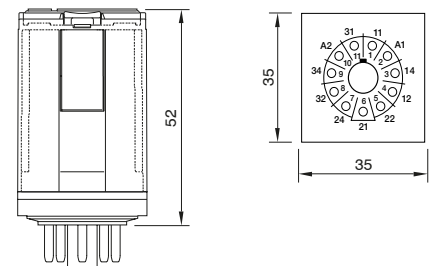


fig. 4. Dimensions (mm)



## Technical approvals, conformities

Standards IEC/EN 60947; IEC/EN 61810



Approvals C4-A40 only