

C32DL/DC24V

3-pole | Change-over double contact | Control relay



Main circuit

| | |
|--|------------------|
| Available contact materials | AgCuNi |
| Recommended minimum contact load | 1 mA / 5 V |
| Maximum contact load AC | 6 A / 250 V AC-1 |
| Maximum contact load DC | 6 A / 30 V DC-1 |
| Inrush current | 15 A, 20 ms |
| Rated load AC | 1 500 VA |
| Rated load DC | fig. 3. |
| Rated current | 6 A |
| Mechanical endurance (cycles) | ≥ 100 000 000 |
| Electrical endurance at rated load AC-1 (cycles) | ≥ 1 500 000 |

Control circuit

| | |
|---------------------------|---|
| Nominal voltage | see table product references |
| Operating voltage range | 0.8 U _N ... 1.20 U _N |
| Pick-up voltage | 0.8 U _N |
| Release voltage | > 0.15 x U _N / > 0.05 x U _N |
| Power consumption AC / DC | 2.5 VA / 1.2 W |

Coil table

| U _{DC} (V) | R(Ω) | I(mA) |
|---------------------|------|-------|
| 24 | 480 | 50 |

Types with LED indicator take additional 5 ... 10 mA @ < 80 V

Insulation

| | |
|--------------------------------|----------------|
| Test voltage open contact | 1.5 kV / 1 min |
| Test voltage contact / contact | 1.5 kV / 1 min |
| Test voltage contact / coil | 2 kV / 1 min |
| Overvoltage category | III |
| Insulation resistance at 500 V | ≥ 1 GΩ |
| Pollution degree | 3 |

General data

| | |
|---|-------------------------------|
| Storage temperature (no ice) | -40 ... 80 °C |
| Operation temperature | -40 ... 70 °C |
| Pick-up time AC / DC | 3 ... 10 ms / ≤ 12 ms |
| Release time AC / DC | 2 ... 15 ms / ≤ 3.5 ms |
| Bounce time NO contact AC / DC | 3 ... 6 ms / approx. ≤ 3.5 ms |
| Maximum switching frequency at rated load | 360 / h |
| Weight | 80 g |
| Housing material | PA / PC |

Product references

| Description | Type | 24 |
|---------------------------|--------------|----|
| LED & Free wheeling diode | C32DL/DC...V | ✓ |

AC relays also available as 60 Hz. Other voltages on request. Please contact support@comatreleco.com.
«...» List coil voltage to complete product references.

Accessories

| | |
|--------|--|
| Socket | S3-B, S3-S, S3-M, S3-M0, S3-M1, S3-MR, S3-M0R, S3-M1R, EC-11 |
|--------|--|

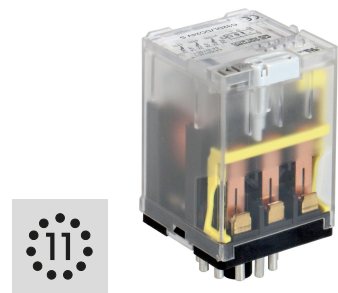


fig. 1. Wiring diagram

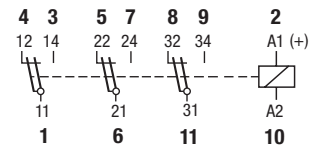


fig. 2. AC voltage endurance

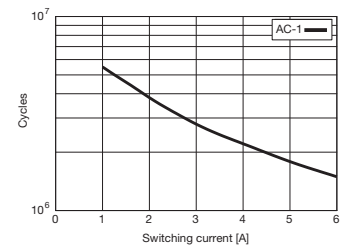


fig. 3. DC load limit curve

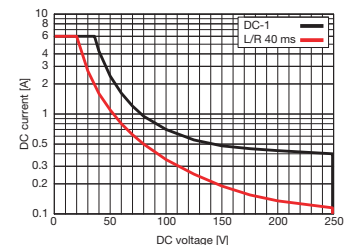
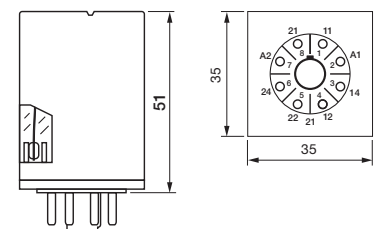


fig. 4. Dimensions (mm)



Technical approvals, conformities

Standards IEC/EN 60947; IEC/EN 61810

