

C32L/AC115V

3-pole | Change-over double contact | Control relay



Main circuit

Available contact materials	AgCuNi
Recommended minimum contact load	1 mA / 5 V
Maximum contact load AC	6 A / 250 V AC-1
Maximum contact load DC	6 A / 30 V DC-1
Inrush current	15 A, 20 ms
Rated load AC	1 500 VA
Rated load DC	fig. 3.
Rated current	6 A
Mechanical endurance (cycles)	≥ 100 000 000
Electrical endurance at rated load AC-1 (cycles)	≥ 1 500 000

Control circuit

Nominal voltage	see table product references
Operating voltage range	0.8 U _N ... 1.20 U _N
Pick-up voltage	0.8 U _N
Release voltage	> 0.15 x U _N / > 0.05 x U _N
Power consumption AC / DC	2.5 VA / 1.2 W

Coil table

U _{AC} (V)	R(Ω)	I(mA)
115	1 350	23

Types with LED indicator take additional 5 ... 10 mA @ < 80 V

Insulation

Test voltage open contact	1.5 kV / 1 min
Test voltage contact / contact	1.5 kV / 1 min
Test voltage contact / coil	2 kV / 1 min
Overtoltage category	III
Insulation resistance at 500 V	≥ 1 GΩ
Pollution degree	3

General data

Storage temperature (no ice)	-40 ... 80 °C
Operation temperature	-40 ... 70 °C
Pick-up time AC / DC	3 ... 10 ms / ≤ 12 ms
Release time AC / DC	2 ... 15 ms / ≤ 3.5 ms
Bounce time NO contact AC / DC	3 ... 6 ms / approx. ≤ 3.5 ms
Maximum switching frequency at rated load	360 / h
Weight	80 g
Housing material	PA / PC

Accessories

Socket	S3-B, S3-S, S3-M, S3-M0, S3-M1, S3-MR, S3-M0R, S3-M1R, EC-11
--------	--

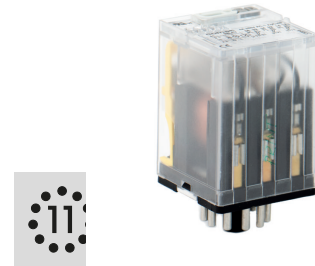


fig. 1. Wiring diagram

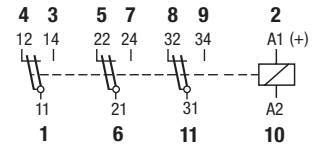


fig. 2. AC voltage endurance

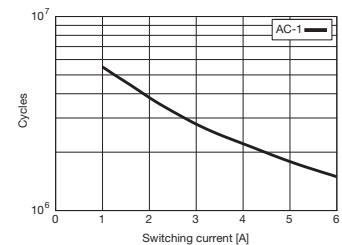


fig. 3. DC load limit curve

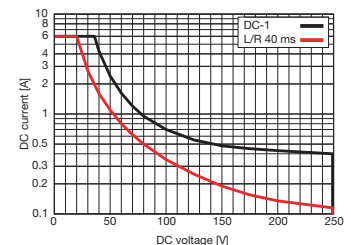
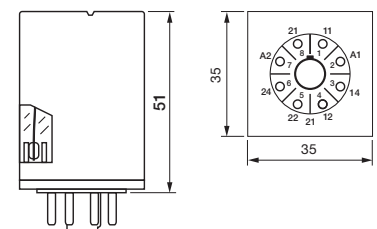


fig. 4. Dimensions (mm)



Technical approvals, conformities

Standards IEC/EN 60947; IEC/EN 61810

