

# C7-A20FX/DC220V

2 pole | changeover contact | Faston



## Main circuit

|   |                       |
|---|-----------------------|
| Available contact materials                             | ⚡ AgNi                |
| Recommended minimum contact load                        | 10 mA / 10 V          |
| Maximum contact load AC                                 | 10 A / 250 V AC-1     |
| Maximum contact load DC                                 | 10 A / 30 V DC-1      |
| Inrush current  | 30 A, 20 ms           |
| Rated load AC   | 2 500 VA              |
| Rated load DC   | fig. 3.               |
| Rated current   | 10 A                  |
| Mechanical endurance (cycles)                           | ≥ 10 000 000          |
| Electrical endurance at rated load AC-1 / DC-1 (cycles) | ≥ 300 000 / ≥ 100 000 |

## Control circuit

|                           |   |
|---------------------------|---|
| Nominal voltage           | see table product references              |
| Operating voltage range   | 0.8 U <sub>N</sub> ... 1.1 U <sub>N</sub> |
| Pick-up voltage           | ≤ 0.8 U <sub>N</sub>                      |
| Release voltage           | ≥ 0.1 U <sub>N</sub>                      |
| Power consumption AC / DC | 1.2 VA / 1 W                              |

## Coil table

| V DC | Ohm    | mA |
|------|--------|----|
| 220  | 53 146 | 4  |

## Insulation

|                                |                |
|--------------------------------|----------------|
| Test voltage open contact      | 1 kV / 1 min   |
| Test voltage contact / contact | 2.5 kV / 1 min |
| Test voltage contact / coil    | 2.5 kV / 1 min |
| Overvoltage category           | III            |
| Insulation resistance at 500 V | ≥ 1 GΩ         |
| Pollution degree               | 3              |

## General data

|   |                |
|---|----------------|
| Storage temperature (no ice)              | -40 ... 80 °C  |
| Operation temperature                     | -40 ... 60 °C  |
| Pick-up time / bounce time                | 16 ms / ≤ 3 ms |
| Release time / bounce time                | 8 ms / ≤ 1 ms  |
| Maximum switching frequency at rated load | 1 200 / h      |
| Weight                                    | 35 g           |
| Housing material                          | PA / PC        |

## Accessories

|                         |                          |
|-------------------------|--------------------------|
| Socket                  | S7-C, S7-IO, S7-P, S7-PI |
| Blanking plug           | S9-NP (BAG 10 PCS)       |
| Test Button w/o locking | S9-OP (BAG 10 PCS)       |

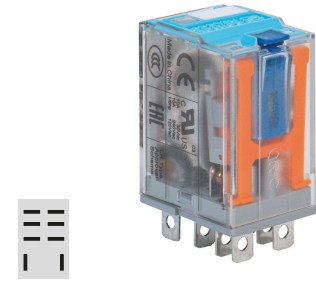


fig. 1. Wiring diagram

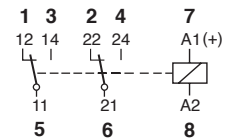


fig. 2. AC voltage endurance

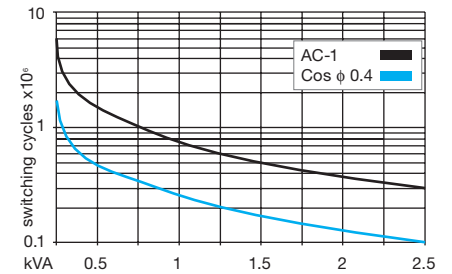


fig. 3. DC load limit curve

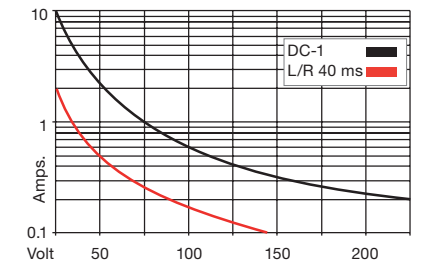
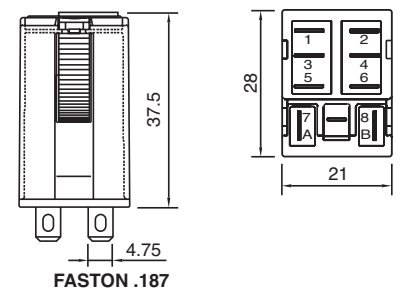


fig. 4. Dimensions (mm)



## Technical approvals, conformities

Standards IEC/EN 60947; IEC/EN 61810

