

S4-GR

14-pin R4 Relay socket | screw terminal



General data

Rated load	10 A / 250 V
Dielectric strength	
- All terminals / DIN rail	2.5 kV rms / 1 min
- Terminal / terminal	2.5 kV rms / 1 min
Conductor cross section	
- Single wire	1.5 mm ² / AWG 16 or 2 x 1.5 mm ² / AWG 16
- Multi wire (un-crimped)	0.34 mm ² / AWG 22 ... 1 mm ² / AWG 18
Nominal screw torque	0.8 Nm
Screw Dimension	M3.5 Phillips-slot (combo)
Mounting	TH35 (EN 60715) or back panel mounting
Storage temperature (no ice)	-40 ... 80 °C
Operation temperature	-40 ... 70 °C
Weight	80 g
Housing material	PA

Optional Accessories

Retaining clip plastic	S3-CM/CP-15B (BAG 10 PCS)
--------------------------	---------------------------

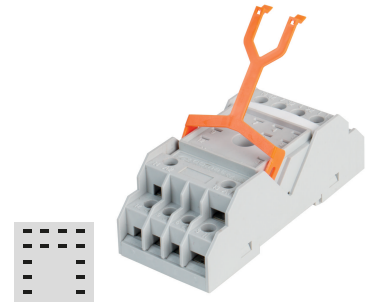


fig. 1. Wiring diagram

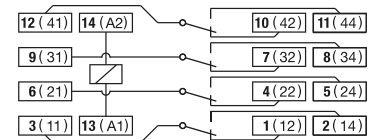
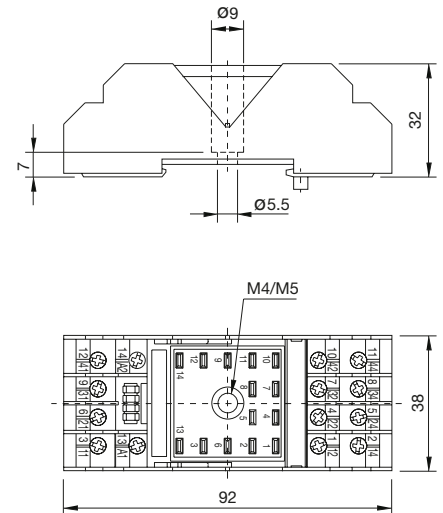


fig. 2. Dimensions (mm)



Technical approvals, conformities

Standards EN 60664-1

Railway EN 45545-2; EN 50155

Approvals